

CHNI3C

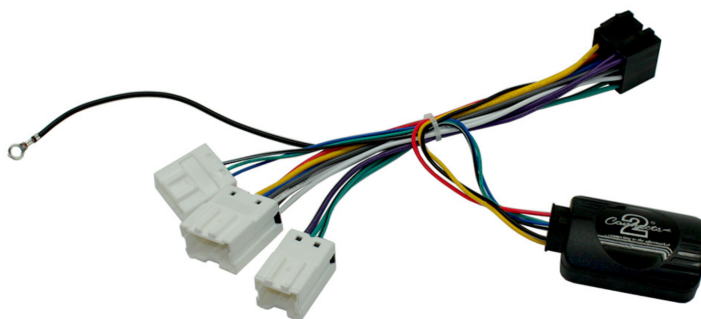
Steering Wheel Control Interface *for select Nissan vehicles*



Works with
Analogue



USB Updateable



INSTRUCTION MANUAL

CHNI3C

Nissan steering wheel control interface for Nissan vehicles without CAN-Bus.

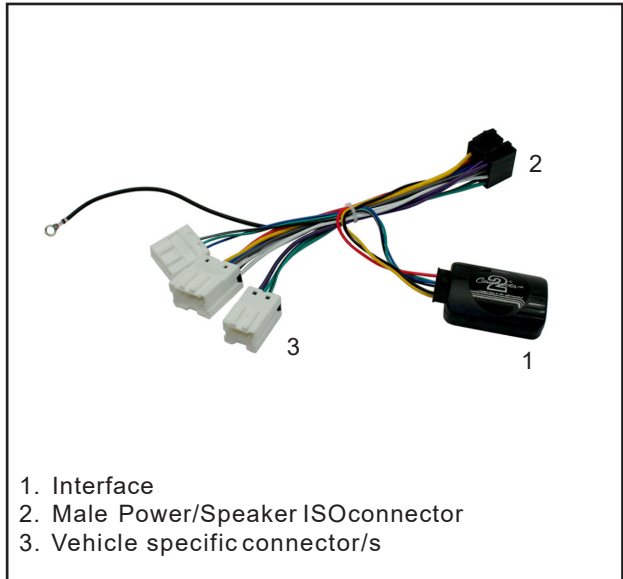
Product Contents

- Interface
- Harness
- Instruction

Application

Navara 2006>
350Z 2003>
X-Trail 2001>

6 & 10 Way Nissan
Connector



Prior to installation

Read the manual prior to installation. Technical knowledge is necessary for installation. The place of installation must be free of moisture and away from heat sources. Please ensure you use the correct tools to avoid damage to the vehicle or product.

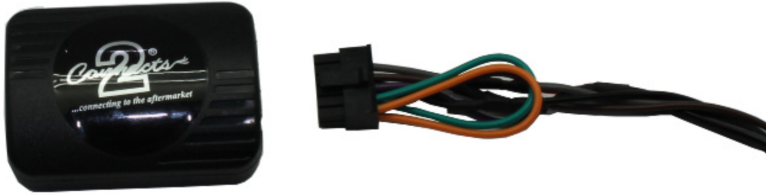
Aerpro can not be held responsible for the installation of this product.

Technical Support

If you need assistance setting up or using your Aerpro product now or in the future, call Aerpro Support Australia
TEL: 03 – 8587 8898 FAX: 03 – 8587 8866 Mon-Fri 9am – 5pm AEST. If you would like to download a digital copy of this manual, or other Aerpro manuals/software, please visit the <http://aerpro.com> website.

FITTING GUIDE

1. Remove and disconnect the original head unit.
2. Connect the 12 way molex connector of the head unit patch lead (supplied separately) to the interface.



3. Connect the opposite end of head unit patch lead to the head unit steering wheel control input on the back of the aftermarket head unit. This may be a 3.5mm jack plug or a wire input depending upon the head unit brand being fitted. Please see the head unit installation manual for further information on where to connect.

Important Note: This step must be completed before connecting power to the interface. Failure to do so may result in no steering wheel control function.

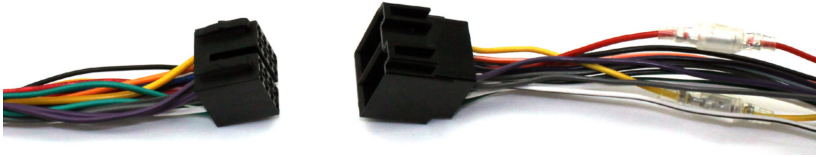


4. Connect the 14 way molex connector to the interface.



FITTING GUIDE

5. Connect the male power/speaker ISOharnessto the female power/speaker ISOharnessfrom the aftermarket head unit.



Foraftermarket head unitswhich do not have an ISOconnector the interface usesthe following wiring colours:

Wire Colour	Function
Yellow	Permanent 12V
Black	Ground
Red	12V Ignition
Orange	Illumination
Blue	Antenna Remote

Wire Colour	Function
Purple	Right Rear Speaker +
Purple/Black	Righ Rear Speaker -
Green	Left Rear Speaker +
Green/Black	Left Rear Speaker -
Grey	Right Front Speaker +
Grey/Black	Right Front Speaker -
White	Left Front Speaker +
White/Black	Left Front Speaker -

6. Connect the female vehicle specific connector to the male vehicle connector. Testhead unit for correct operation.

STEERINGWHEELCONTROL FUNCTIONS

